



— PRESS KIT —

SIAM KEMPINSKI HOTEL BANGKOK

Kempinski
HOTELIERS SINCE 1897


Siam
Kempinski Hotel
BANGKOK



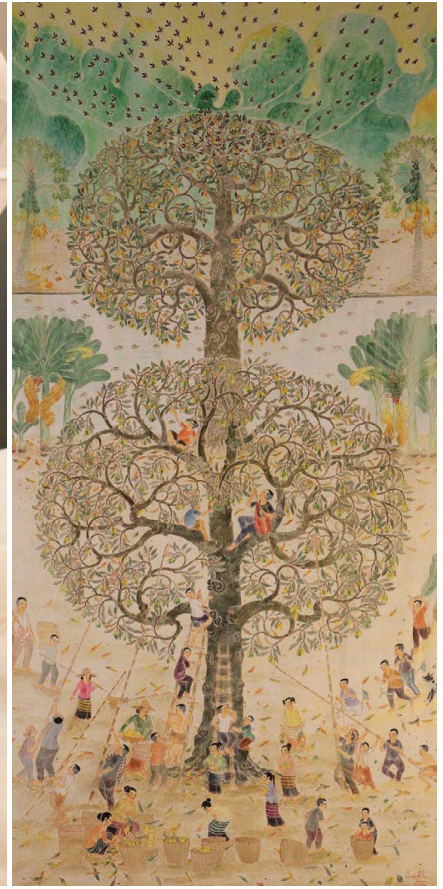
Kempinski Hotels, Europe's oldest luxury hotel group, established its first property in Thailand's vibrant capital city, Bangkok, on 27 September 2010. Combining Kempinski's signature European elegance with the rich traditions of Thai hospitality, this five-star Siam Kempinski Hotel Bangkok offers a refined urban retreat.

Set on the grounds of the historic Sra Pathum Palace or Lotus Pond Palace, originally commissioned by King Rama IV as a retreat, the hotel reflects the grandeur of a bygone era.

The property was once home to Prince Mahidol, father of King Bhumibol Adulyadej The Great (King Rama IX) and grandfather of King Maha Vajiralongkorn (King Rama X). Today, it serves as the royal residence of Princess Maha Chakri Sirindhorn.

This resort-style city hotel features 397 well-appointed guest rooms and suites, including 22 rooms and suites with direct pool access and 7 animal-themed family suites.

kempinski.com/bangkok



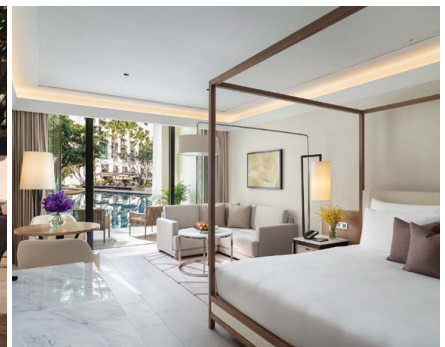
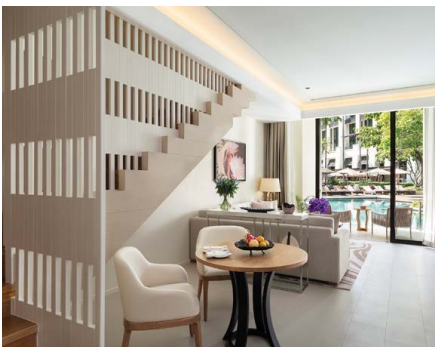
DESIGN & COMFORT

The hotel is designed as a tranquil sanctuary, featuring lush tropical gardens and four saltwater pools at its heart. The lotus flower motif is prominently incorporated into the design, reflecting the area's historical significance. Its interior design enjoys more than 2,000 pieces of art, including paintings and sculptures by Thai artists who were commissioned to create works specifically for the property.



Situated in Bangkok's premier shopping and entertainment district, Siam Kempinski Hotel Bangkok is easily accessible by both car and the BTS Skytrain.

ACCOMMODATION



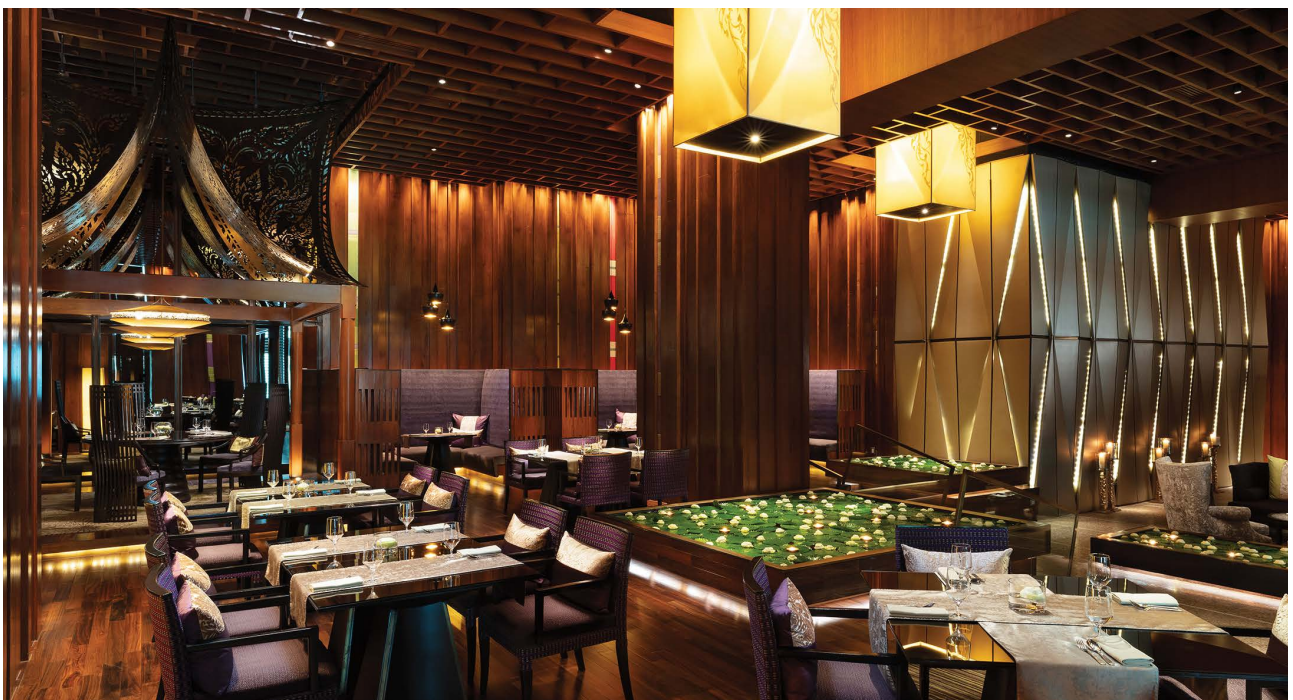
The hotel boasts 397 elegant rooms and suites, many of which offer stunning views of the verdant gardens. The rooms feature contemporary decor with Thai elements, such as silk curtains and decorative items. Guests enjoy modern comforts, high-tech entertainment systems and luxurious marble bathrooms. Complimentary Wi-Fi and a daily-replenished mini-bar are included.

DINING

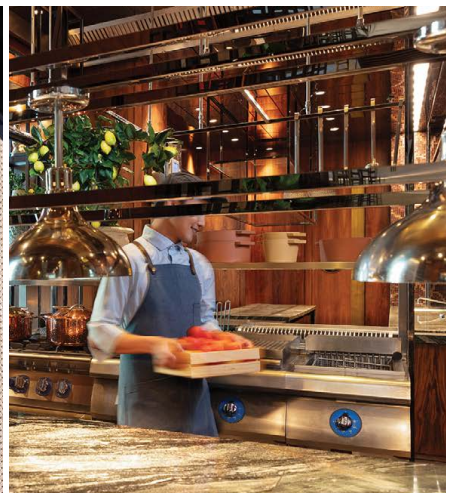
REFLECTING KEMPINSKI'S PHILOSOPHY OF HARMONISING EUROPEAN FLAIR AND LOCAL TRADITIONS, SIAM KEMPINSKI HOTEL BANGKOK OFFERS A VARIETY OF RESTAURANTS, AND ENSURES THAT NO CULINARY WISHES ARE LEFT UNFULFILLED .

SRA BUA BY KIIN KIIN

More than just a dining experience, Sra Bua by Kiin Kiin offers a culinary journey conceptualised by Chef Henrik Yde-Andersen, a pioneer of fine-dining Thai cuisine in Copenhagen. His restaurant, Kiin Kiin, was among the first in the world to receive a Michelin star in 2008. At Sra Bua by Kiin Kiin, guests embark on a sensory experience as chefs present innovative interpretations of traditional Thai ingredients. The restaurant focuses on the artistry and creativity of Thai cuisine, offering a unique and memorable dining experience.



ALATi



ALATi presents a culinary exploration with global influences, emphasising the natural flavours of land and sea. Guests can savour a diverse selection of small, flavourful dishes designed for sharing. The open kitchen allows diners to witness culinary expertise firsthand, enhancing the interactive dining experience where tradition meets innovation.

THE ADDITION

A refined breakfast, celebrating Kempinski's European flair, awaits you. Guests can indulge in an extensive à la carte menu and an international buffet, featuring healthy options, gourmet dishes and freshly baked pastries. Al fresco dining in a serene garden setting amidst lush tropical surroundings provides a peaceful start to the day.



ROTUNDA



Located by the pool, Rotunda Bar offers a relaxed environment for enjoying light meals, snacks and refreshing beverages. Guests can unwind with cocktails or chilled beers under the shade of trees or lounge on comfortable sun beds while being attended by friendly staff.

1897 LOUNGE

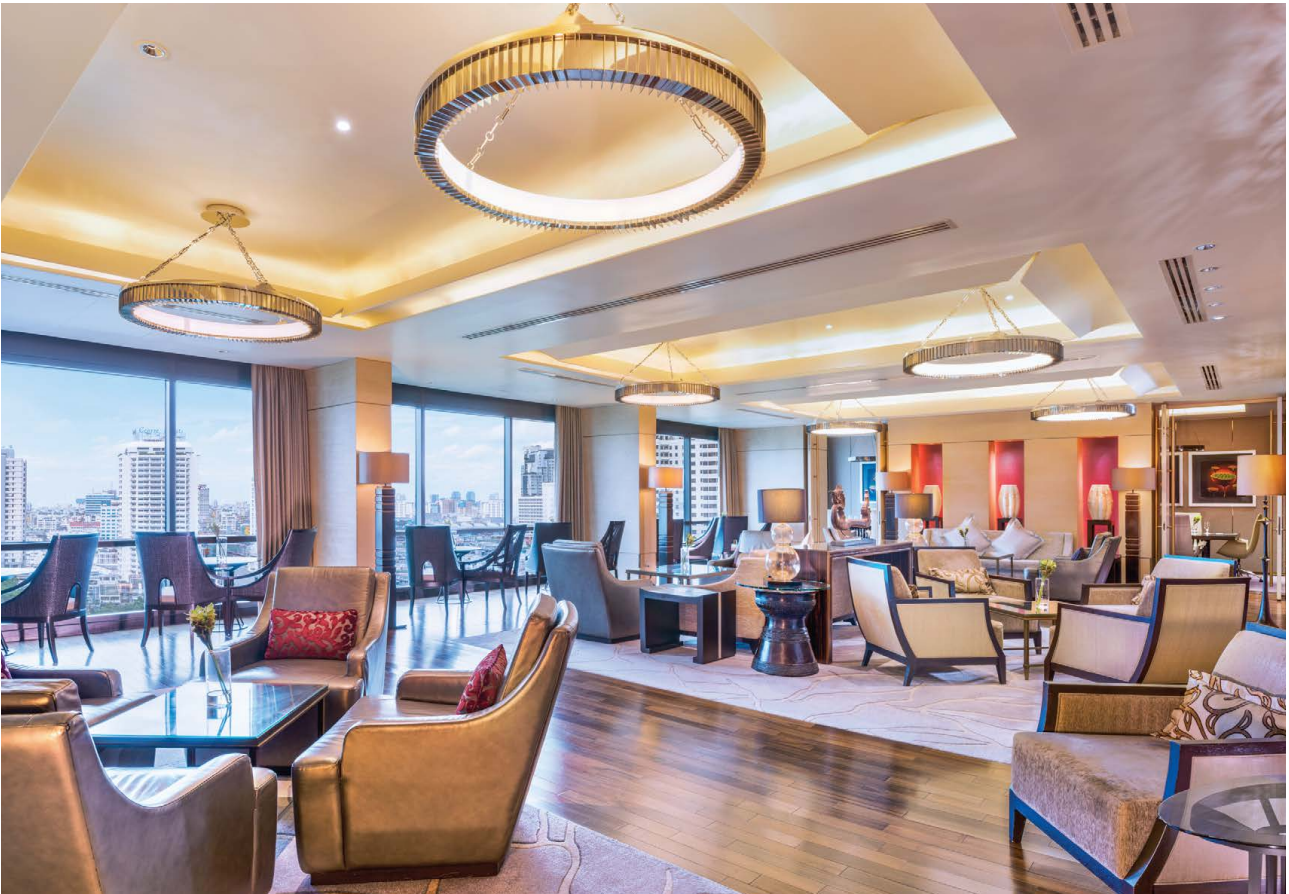


Named to honour Kempinski's founding year, this luxurious lounge in the grand lobby provides a sophisticated space for meetings, afternoon tea and evening drinks. The menu features Champagne, fine wines, rare spirits and creative cocktails.

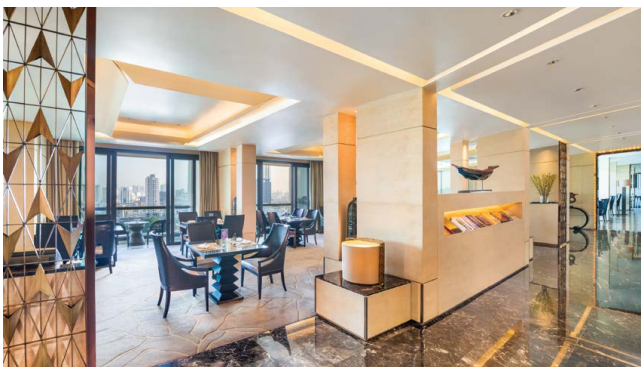


1897 BAR

Adjacent to the 1897 Lounge, this elegant bar and cigar lounge, in collaboration with La Casa del Habano, offers the finest Cuban cigars and a distinguished selection of whisky, rum and cognac. The European-inspired interior features high ceilings, comfortable seating and an alfresco terrace with tropical evening breezes.



EXECUTIVE LOUNGE



Exclusive to guests on the Executive floors, the Executive Lounge offers personalised check-in and check-out, secretarial services and complimentary food and beverages throughout the day. Facilities include meeting rooms and a private computer station.

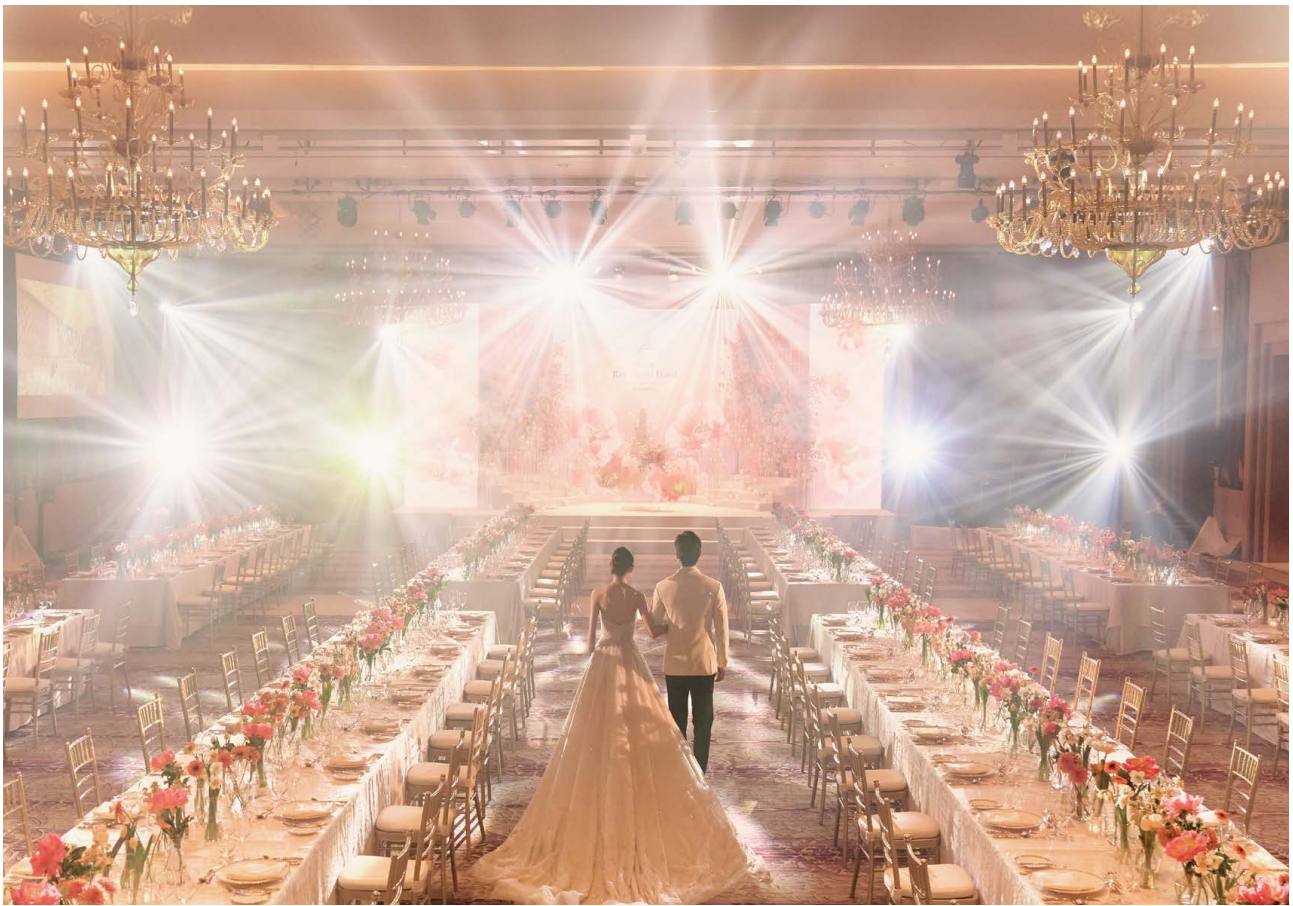


SIAM KEMPINSKI HOTEL BANGKOK

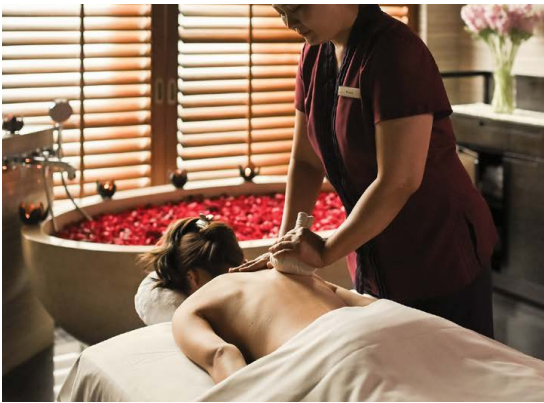
FUNCTION ROOMS

**A VENUE FOR
THE IMPORTANT MOMENTS IN LIFE**

Located in downtown Bangkok, the hotel's function rooms are designed for meetings, social events and weddings, providing an elegant and versatile setting for any occasion.



KEMPINSKI THE SPA



Kempinski The Spa offers a bespoke wellness journey tailored to individual needs. Guests can choose from a selection of treatments, including signature massages and bespoke facials, blending Thai traditions with modern techniques for a holistic experience.

A BRIEF HISTORY OF SIAM KEMPINSKI HOTEL BANGKOK

1920

Prince Mahidol of Songkhla inherited the property and commissioned the construction of Sra Pathum Palace, also known as Lotus Pond Palace. The palace hosted the royal wedding of Prince Mahidol and Princess Sri Nagarindra on 10 September 1920.

1950

The palace was the venue for the royal wedding of King Bhumibol Adulyadej The Great (King Rama IX) and Queen Sirikit on 28 April 1950.

1964

A portion of the palace grounds was leased to build the Siam Intercontinental Hotel. On 11 December 1964, the foundation stone was unveiled by HRH the Late Princess Mother.

2000

The lease for the Siam Intercontinental Hotel expired, and the property was demolished to make way for the Siam Paragon shopping mall and Siam Kempinski Hotel Bangkok.

2002

With the demolition of the Siam Intercontinental Hotel, the Siam Kempinski Hotel Bangkok was conceptualised as a luxury urban oasis, blending architecture, landscaping and artwork with a lush tropical garden.

2010 - Present

Siam Kempinski Hotel Bangkok opened its doors on 27 September 2010. Sra Pathum Palace remains the royal residence of Princess Maha Chakri Sirindhorn.

— PRESS CONTACTS —

LALIDA HIRUNTEERAPOL

Director of Marketing & Communications
email: lalida.hirunteerapol@kempinski.com

KULLAKITTI CHAROENMUANG

Public Relations Manager
email: kullakiti.charoenmuang@kempinski.com

SIAM KEMPINSKI HOTEL BANGKOK

991/9 Rama I Road Pathumwan • Bangkok 10330 • Thailand
Tel +66 2 162 9000 • Fax +66 2 162 9301
kempinski.com/bangkok

— SOCIAL MEDIA —

INSTAGRAM 

[@SiamKempinskiHotelBangkok](https://www.instagram.com/SiamKempinskiHotelBangkok)

 FACEBOOK

[@SiamKempinskiHotelBangkok](https://www.facebook.com/SiamKempinskiHotelBangkok)

— SOCIAL MEDIA —

WEIBO 



WECHAT 



LITTLE RED BOOK 



SIAM KEMPINSKI HOTEL BANGKOK

991/9 Rama I Road, Pathumwan

Bangkok 10330

Thailand

T +66 (0)2 162 9000

reservations.siambangkok@kempinski.com

kempinski.com/bangkok

GPS DMS: 13°44'54"N, 100°32'05"E

GPS DD: 13.7484, 100.5348