



— PRESS KIT —

EASTERN VENICE

Kempinski
HOTELIERS SINCE 1897



Kempinski Hotel
Suzhou

CHINA



— WELCOME —

The city of Suzhou has long been reputed as the “Venice of the Orient” for its rivers, lakes and unique architecture. Kempinski Hotel Suzhou, with its prime location in the centre of the Suzhou Industrial Park. A 20-minute drive from Suzhou Industrial Railway Station, and 30-minute drive from the downtown railway station, the hotel is surrounded by lakes, gardens and lawns and is a top choice in Suzhou for guests seeking not only impeccable accommodation but also unforgettable memories. The hotel has five restaurant outlets and one Executive lounges to satisfy the taste of diners with well-designed dining environment and special cuisine. The 458-room hotel offers

guest rooms from 48 sqm and suites from 80 sqm. It also boasts a luxurious, 1,914 sq m grand ballroom which can accommodate 1,200 people for a banquet, making it one of the largest ballrooms in the Yangtze River Delta. In addition, the hotel has about 4,000 square meters of outdoor lakeside lawn function area, fully stimulate the imagination and creativity of guests. Kempinski Hotel Suzhou has various fitness and leisure facilities. Covering an area of 4000 square meters, the health club has a fully equipped gym, a 50-meter standard indoor heated swimming pool and a luxurious Jacuzzi with garden views.



— ABOUT SUZHOU —

Suzhou is located in the southern part of the Jiangsu province close to the east of Taihu Lake. Suzhou is a historical city in China, some people call here it the "East Venice" because of the rivers, the bridges and the condition of the people who live here. Suzhou Garden is the symbol of the buildings in Jiangnan. It's famous for its lakes, hills and the gardens. Suzhou, with

an area of more than 8,600 square kilometers and a population of more than 12 million, is a historic city in China. Suzhou gardens have a long reputation and can be enjoyed, visited and lived in. It shows the essence of Chinese culture and has unique historical status and great artistic value.





— ROOM AND SUITES —

With stunning views of Dushu Lake and Jinji Lake, the hotel boasts 458 rooms and suites with eight different room types to choose from. The exquisite design, choice of materials, style and colour of the rooms all exude luxury and charm. Kempinski Hotel Suzhou is committed to providing excellent service so that guests can enjoy a good night's sleep while travelling.

— THE RESTAURANTS —

The hotel has four restaurants outlets and one Executive lounges to satisfy the taste of diners with well-designed dining environment and special cuisine. At Seasons Cafe, guests can enjoy classic Asian delicacies, traditional Suzhou dishes and a variety of international flavor. Enjoy authentic Suzhou and Huaiyang cuisine cooked with quality ingredients at Wang Hu Ge Chinese Restaurant; Taste the charms of Bavarian cuisine and fresh beer at our very own Munich Brewery; Enjoy coffee and dessert in the Kempji Deli and Lobby Lounge facing Dushu Lake.

The design of the Munich Brewery adopts the classic German interior decoration style, with the bright copper pipes and fermentation tanks inside the restaurant give guests a classic beauty. With an authentic Bavarian menu, guests can enjoy unique German cuisine. In addition to gourmet food, fresh brewed beer is also a major feature of Munich Brewery, with sufficient ingredients and no accessories to ensure the original flavor and strong taste of beer. Taste a glass of fresh beer, watch the wonderful performance of the live band, and enjoy the fun of social gatherings.





— MEETING IN STYLE —

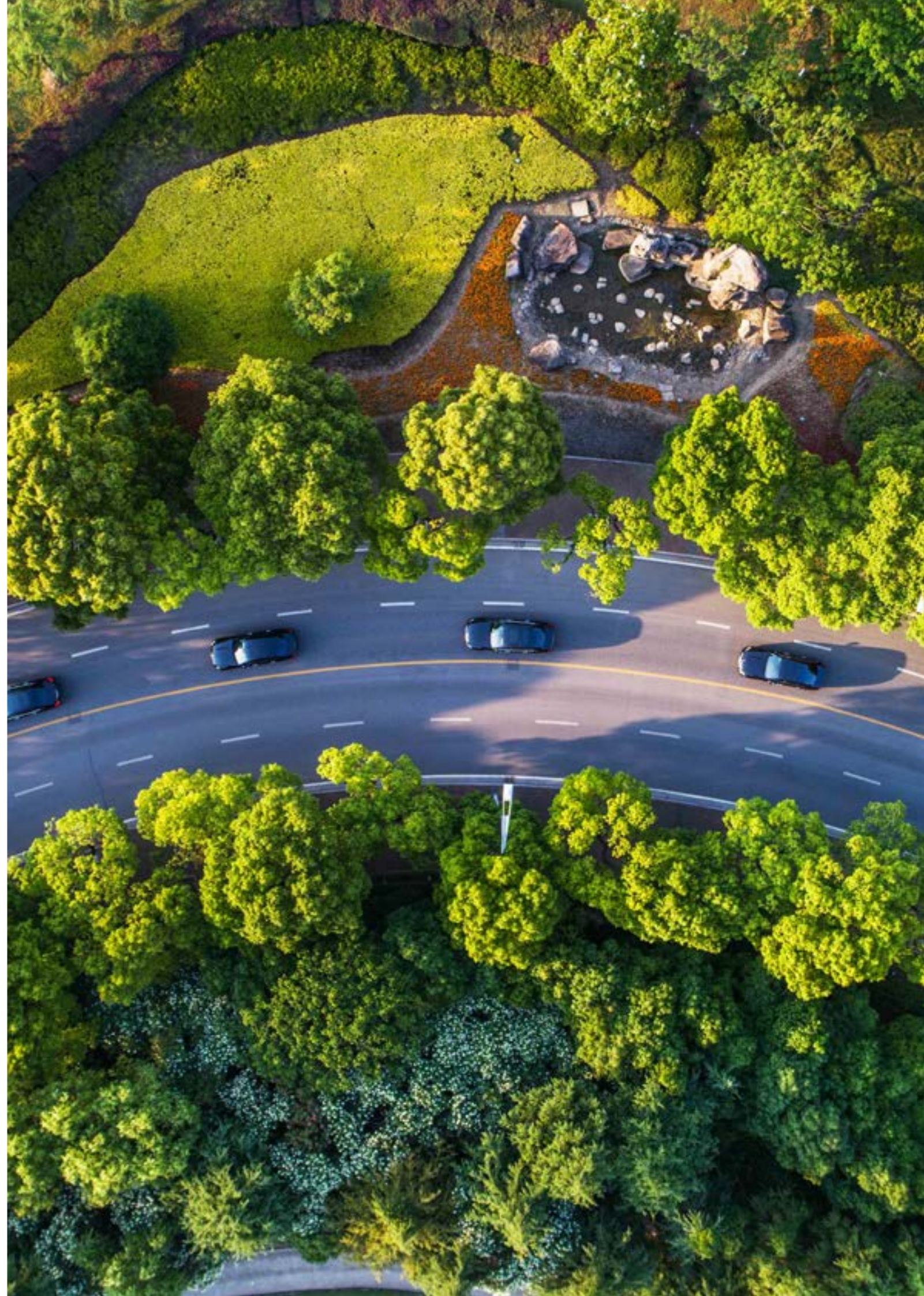
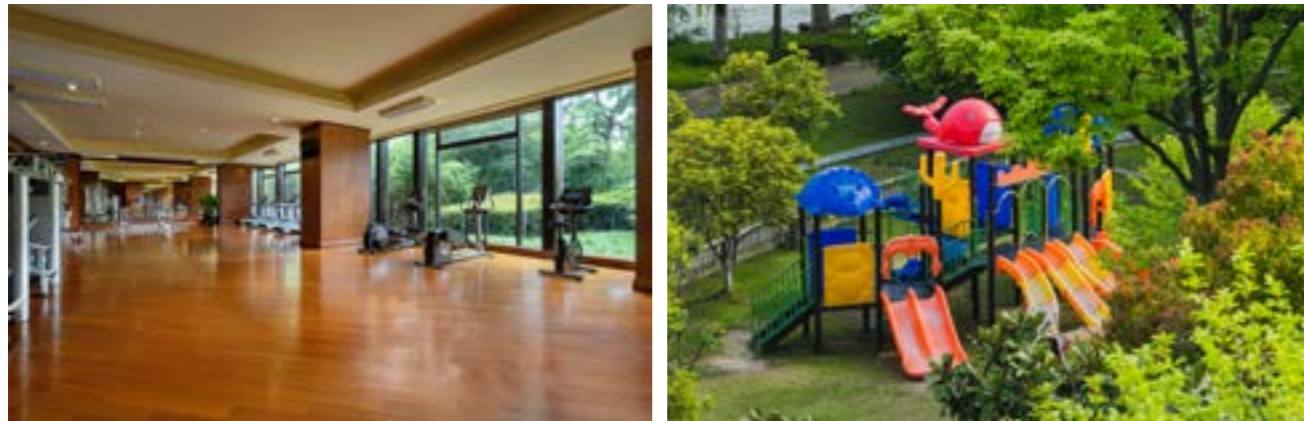
The hotel has an area of about 8,000 sq m for conference rooms and banquet facilities, including a 1,914sqm pillar-free grand ballroom, a 630 sq m luxury state ballroom and ten small and medium-sized multifunctional conference rooms. In addition, the hotel has an outdoor lakeside-lawn function area of about 4,000 sq

m, to create influential conferences, weddings and business gatherings. All conference rooms are covered by high-speed wireless networks, equipped with multimedia facilities and audiovisual equipment and provide forward-looking and superior service to meet the diverse needs of conference organisers.



— HEALTH CLUB —

Let yourself enjoy the sports at Kempinski Hotel Suzhou. The hotel has a fully equipped fitness center, a 50 meter-long standard indoor swimming pool, a SPA facility, an aerobics room. Allow guests to build up their body, relax and stay in peak condition all the time. The children's playground allows children to enjoy the fun of exploration. Meanwhile, the outdoor area of the hotel also provides children's play area to share the joy in nature and release the nature of children.



PRESS CONTACT

SILVER YANG
Marketing & Communication Manager

Tel +86 512 6289 7888 - 6806 ☒ Fax +86 512 6289 7866

silver.yang@kempinski.com ☒ www.kempinski.com/suzhou

KEMPINSKI HOTEL SUZHOU
1 Guobin Road, Suzhou Industrial Park,
Suzhou Jiangsu Province, China

T + 86 0512 6289 7888
www.kempinski.com/suzhou

SOCIAL MEDIA

WECHA
KEMPINSKI HOTEL SUZHOU



WEIBO
KEMPINSKI HOTEL SUZHOU

