



Marsa Malaz
Kempinski

THE PEARL | DOHA

مرسى ملاذ كمبينسكي

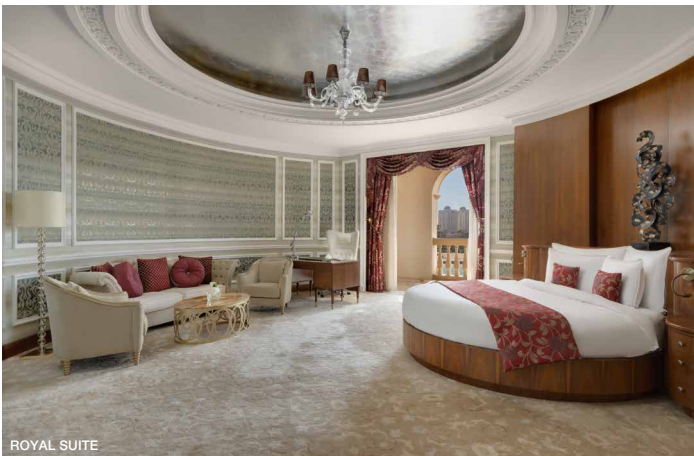
An Island of Palatial Grandeur

Kempinski

HOTELIERS SINCE 1897

A private island of grandeur in the heart of The Pearl

The Pearl Doha, situated near the esteemed West Bay District, is an artificial island boasting Mediterranean-style marinas adorned with yachts, residential towers, villas, and upscale hotels. This opulent destination goes beyond with a lavish shopping scene, featuring premium designer boutiques and showrooms. The island also stands out for its modern dining options, ranging from delightful ice cream parlours to exquisite five-star culinary experiences. With pedestrian-friendly squares, plazas, and an array of beautifully landscaped gardens, The Pearl is a favoured visitor attraction.



Facilities & Services

ROOMS & SUITES

- 208 rooms and 73 suites
- Luxury Royal Suite (650 sq m) with a private wellness retreat
- Largest standard room in the city (75 sq m)
- Private balcony in all rooms and suites
- Stunning The Pearl, pool, or sea view
- Complimentary Wi-Fi internet
- 55-inch LCD TV
- Welcome amenities
- 24-hour in-room dining

MEETINGS & EVENTS

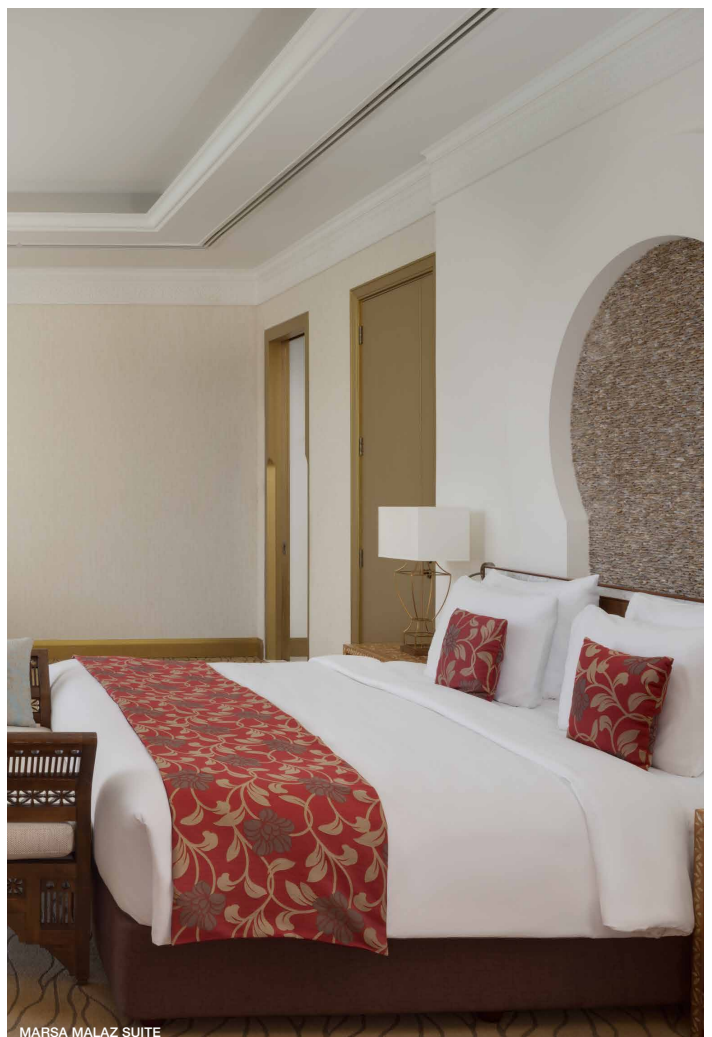
- 2,200 sq m meeting spaces
- Up to 1,500 guest capacity
- Palazzo Grand Ballroom (1,100 sq m) with a spacious foyer and private entrance
- Venezia Ballroom (305 sq m)
- 6 versatile meeting rooms (67 sq m - 111 sq m)
- Outdoor venues
- Wedding showroom and events planner
- Bespoke technical equipment

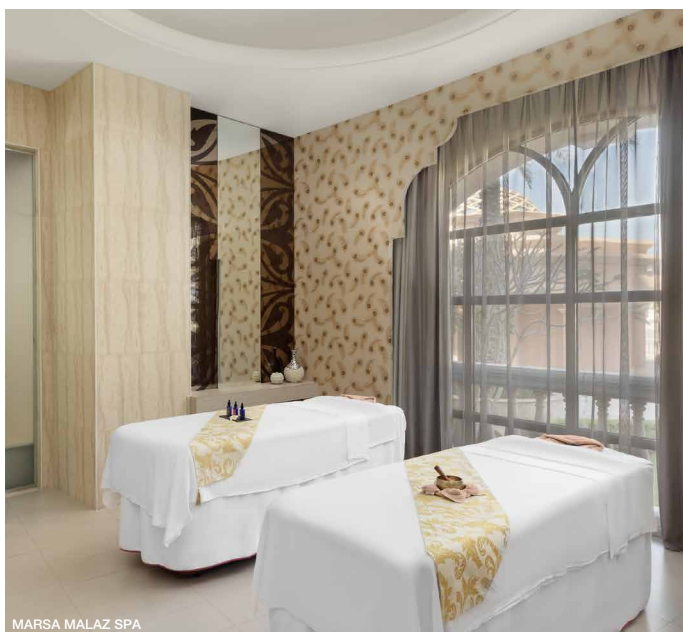
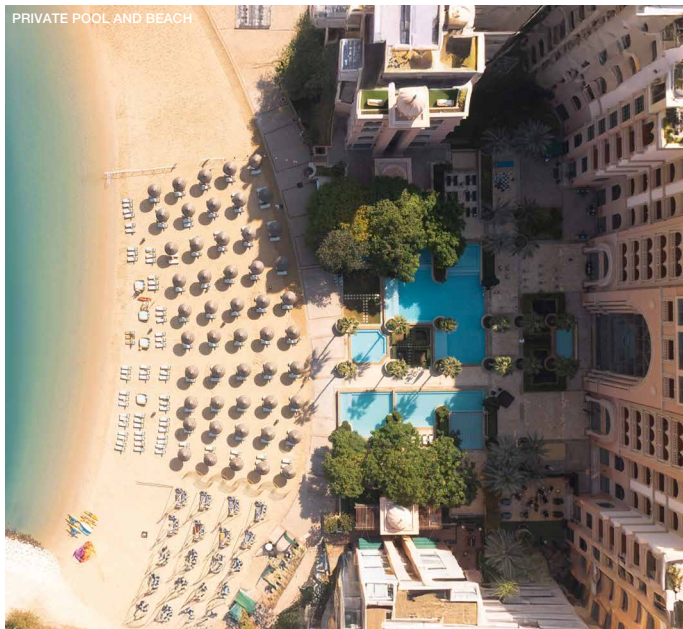
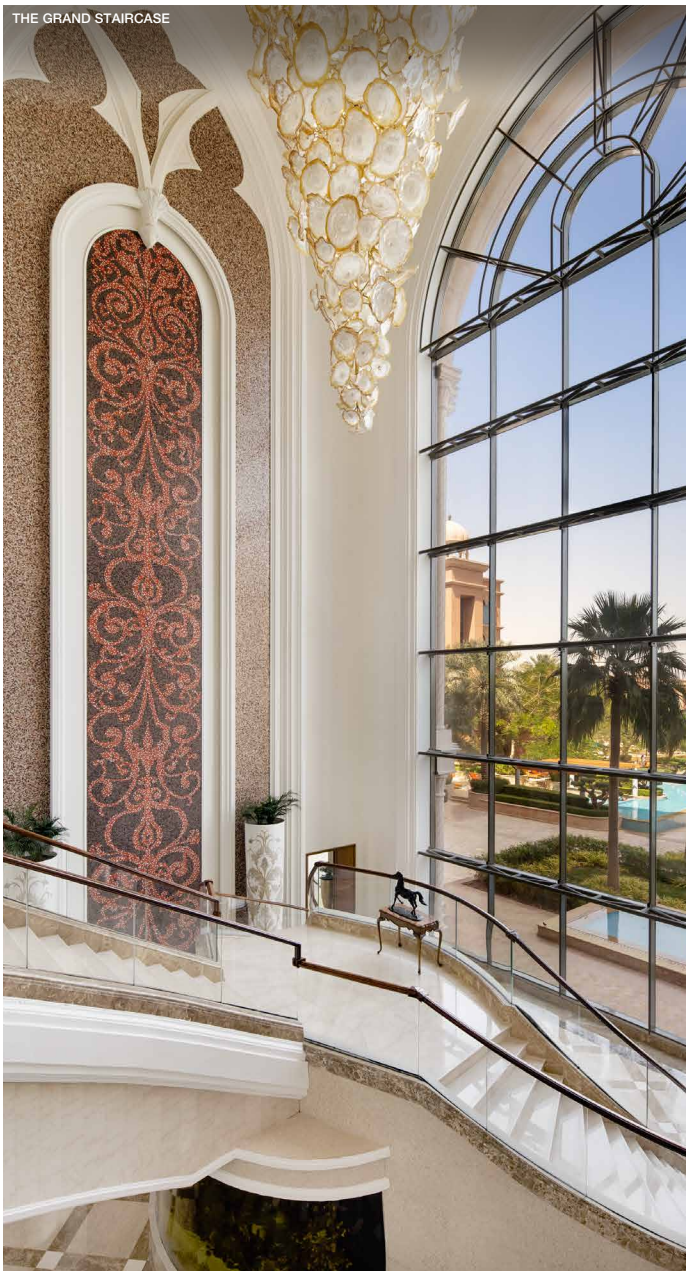
WELLNESS & FITNESS

- Female Fitness Area
- Mixed Fitness Area
- Two Fitness Studios
- Tennis Court
- Two Padel Courts
- Outdoor Activities
- Water Sports

HOTEL SERVICES

- Concierge Services
- Outdoor venues
- Limousine Services
- 24-hour Laundry Services
- Business Centre
- Kids Playroom
- Jewellery Shop
- Barber Shop
- Ladies Beauty Salon





RESTAURANTS & BARS

- ♦ Public House
- ♦ Al Sufra
- ♦ Murano Lobby Lounge
- ♦ Bohemia
- ♦ The Stage
- ♦ NOZOMI
- ♦ FAUCHON Paris
- ♦ Harry's Dolce Vita
- ♦ Lobito de Mar
- ♦ BiBo
- ♦ The Secret Garden

GENERAL INFORMATION

- ♦ Currency: Qatari Riyal (QAR)
- ♦ Time zone: GMT +3 hours
- ♦ Climate: Desert

ATTRACTIONS

- ♦ Desert Safari and Sand Dunes
- ♦ Mangrove Kayaking
- ♦ Katara Cultural Village
- ♦ Place Vendome Mall
- ♦ Lusail Marina
- ♦ Doha Golf Club
- ♦ Al Maha Island
- ♦ Lusail Boulevard
- ♦ West Bay
- ♦ Doha Exhibition and Convention Centre
- ♦ Souq Waqif
- ♦ Museum of Islamic Arts
- ♦ National Museum of Qatar
- ♦ Doha Port and Mina District
- ♦ Qatar National Library
- ♦ Qatar National Convention Centre

Contact Us

For an easy and efficient booking experience, book directly with Kempinski, via kempinski.com, through the Kempinski mobile app, or your preferred travel professional, and benefit from the best rates and service.



MARSA MALAZ KEMPINSKI, THE PEARL - DOHA
Costa Malaz Bay - Marsa Malaz Island, The Pearl
P.O. Box 24892, Doha
Qatar

T: +974 4035 5555
meetings.marsamalaz@kempinski.com
kempinski.com/marsamalaz

GPS DMS: 25° 22' 34" N 51° 32' 59" E
GPS DD: 25.37595, 51.54967