



Kempinski  
The One Suites Hotel

SHANGHAI DOWNTOWN

上海静安  
凯宾斯基全套房酒店

# ART DECO CHIC IN THE HEART OF SHANGHAI

*Kempinski*

HOTELIERS SINCE 1897

# Art Deco Chic In the Heart of Shanghai

Nestled in Puxi's trendy Jingan District, Kempinski The One Suites Shanghai Downtown is perfectly situated for guests to easily explore the city's historic, scenic and cultural heritage. With stunning city views, the hotel is just a short walk away from prime business, shopping and entertainment districts, such as the prestigious People Square and the famous Nanjing Road, which define its central location. Kempinski The One Suites Hotel Shanghai Downtown offers an ideal place to stay for a short- or long-term visit for leisure or business – a personal address in the metropole. Service is tailored to guests' individual needs, paired with timeless interior design that creates the warmth typically enjoyed in a private home.



## Services & Facilities

### SUITES

244 suites including:

- 40 Superior One Bedroom Suite(68㎡)
- 40 Deluxe One Bedroom Suite(62㎡)
- 40 Grand Deluxe One Bedroom Suite (72㎡)
- 80 Premier One Bedroom Suite (80㎡)
- 40 Premier Two Bedroom Business Suite(112㎡)
- 2 Premier Three Bedroom Suite(311㎡)
- 2 Premier Three Bedroom Terrace Suite (600㎡)

### GUEST ROOM FACILITIES

- Internet service
- Alarm Clock Radio with Bluetooth Speakers and USB charging station
- Closet/walk-in closet
- Multi-line telephone(s) with voicemail
- LCD flat panel TV with satellite TV channels
- In-room computer-sized safe

- Bath tub in combination with shower
- Lit make-up mirror
- Fully featured and equipped kitchen/ kitchenette including tea and coffee making facilities, toaster and microwave as well as electro oven
- Branded washing machine with dryer 2 in 1
- Individually controlled air-conditioning

### RESTAURANTS & BARS

- 1Eins Bistro & Lounge
- The One Terrace

### MEETINGS & EVENTS

- 1 Conference Room
- 1 VIP Room

### WELLNESS & SPA

- MOTION Fitness
- Le Flipped Beauty Salon

### SERVICES & AMENITIES

- Private parking garage
- WIFI in all public areas
- Laundry and valet services
- Airport limousine service on request
- 24-hour concierge service
- Private butler service on request
- Additional TV programs on request

### PLACES OF INTEREST

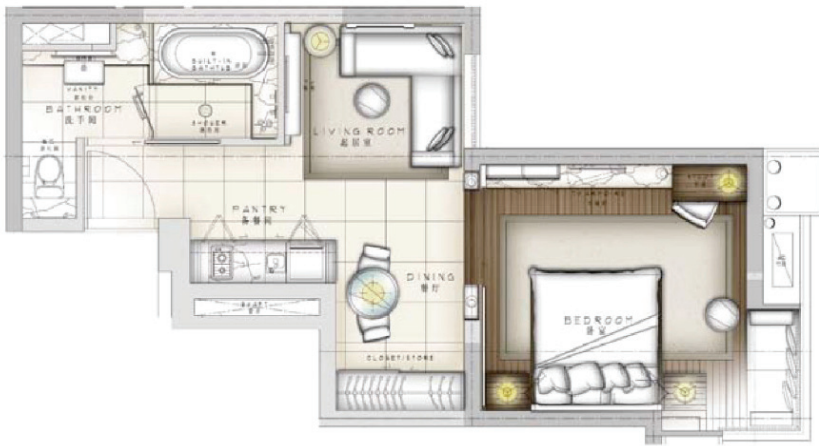
- The Bund (10 min by car)
- Xintiandi Entertainment Hotspot (10 min by car)
- Natural History Museum (5 min by walk)
- Zhang Yuan (10 min by walk)
- Jingan Temple (10 min by car)
- Yuyuan Garden (15 min by car)
- Oriental Pearl TV Tower (20 min by car)
- Tianzifang (15 min by car)

### DIRECTIONS

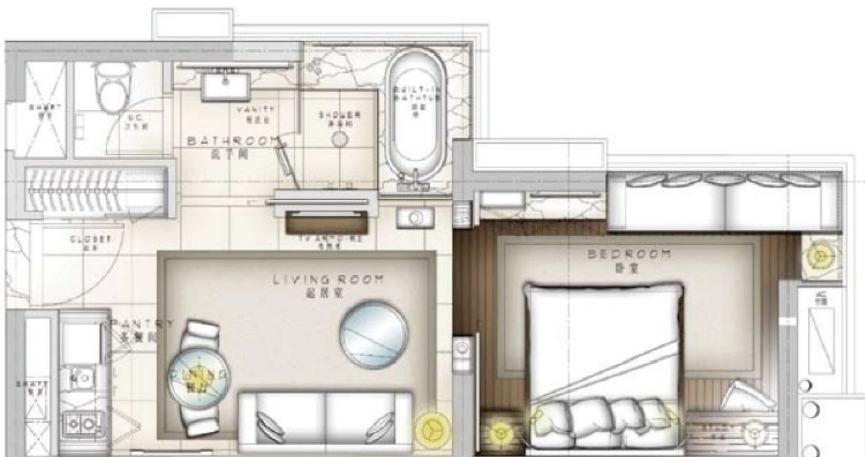
- West Nanjing Road Metro Station (Line 2/12/13): 8 minutes by walk
- Shanghai Railway Station: 15 minutes by car
- Shanghai South Railway Station: 25 minutes by car
- Shanghai Hongqiao Railway Station: 30 minutes by car
- Hongqiao International Airport: 30 minutes by car
- Pudong International Airport: 50 minutes by car

### GENERAL INFORMATION

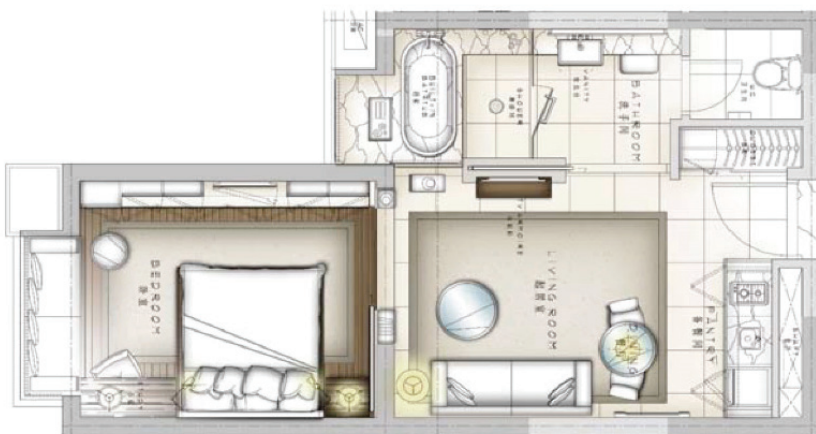
- Language: Mandarin
- Local currency: Chinese Yuan Renminbi (CNY,RMB)
- Climate: Average temperature of -3°C-35°C



Superior One Bedroom Suite



Deluxe One Bedroom Suite



Grand Deluxe  
One Bedroom Suite





Premier One Bedroom Suite



Premier Two Bedroom  
Business Suite



Premier Three Bedroom  
Terrace Suite

# Meetings & Events Plan



VENUE	SQM	HEIGHT (M)	BUFFET	COCKTAIL	GALA	THEATRE	CLASS-ROOM	U SHAPE	BOARD-ROOM
VIP Room	64	3	12	12	12	-	-	-	-
The One Terrace	106	-	40	30	30	-	-	-	-
The One Meeting Room	100	3.15	-	-	-	70	48	26	-

Individual venue set up available



# Contact Us

For an easy and efficient booking experience, book directly with Kempinski, via [kempinski.com](http://kempinski.com), through the Kempinski mobile app, or your preferred travel professional, and benefit from the best rates and service.



KEMPINSKI THE ONE SUITES HOTEL SHANGHAI DOWNTOWN  
No. 601 Fengyang Road  
200041 Shanghai · China

T +86 21 6157 1688  
[res.shanghaisuites@kempinski.com](mailto:res.shanghaisuites@kempinski.com)  
[kempinski.com/shanghai](http://kempinski.com/shanghai)

GPS Long: E 121°27'54.3"  
GPS Lat: N 31°13'56.1"

Follow us on WeChat

