

# The Rendez-Vous with Art and History in the Ultimate Luxury



San Clemente Palace  
Kempinski  
**VENICE**

## **SAN CLEMENTE PALACE KEMPINSKI VENICE**

Isola di San Clemente, 1  
30124, Venice, Italy

T +39 041 4750 111  
reservations.sanclementepalace@kempinski.com  
kempinski.com/venice

GPS DMS: 45°26'D513.67"D3 N 12°19'D557.54"D3 E  
GPS DD: 45.43713 12.33265

**KEMPINSKI.COM/VENICE**



*Kempinski*  
HOTELIERS SINCE 1897

  
EST. 1928  
THE LEADING HOTELS  
OF THE WORLD





World's Leading  
Palace Hotel



Europe's Leading  
Hotel Suite



Europe's  
Best Hotel Spa



Europe's Leading  
Luxury Wedding  
Resort



Best City Hotel in Italy  
Best Hotel Spa in Europe  
Best Italian Cuisine in Europe







# SAN CLEMENTE PALACE & CHURCH

Venice's timeless melody of beauty and culture envelops San Clemente Palace Kempinski. The Venetian retreat is comprised of a series of beautifully restored buildings that once served as a monastery. Vestiges of the past are found in the hotel's palatial Renaissance-inspired interiors, centuries-old gardens and enchanting Mediterranean courtyards.

San Clemente Palace Kempinski features three bars and three special restaurants including a signature restaurant with terraces overlooking the lagoon. Conference and Convention Centre with 6 meeting rooms for welcomes up to 400 people. San Clemente's centuries-old park gardens and the historical courtyards are preferred address for impressive outdoor events for more than 1.200 guests.

First stone of the Church Complex on San Clemente that included a church and a pilgrim's hospice was placed and blessed in 1131. Construction was funded by Pietro Gattileso, perhaps to atone for his sins: his nickname was "the Robber". In 1165 the hospice was opened for soldiers and pilgrims travelling to the Holy Land. In 1288 the relics were brought to the island.





## THE HOLY HOUSE OF LORETO

Above the altar there is a sculpture of the Madonna in cedar, which was brought to the church in 1646. The church holds paintings and frescoes by Giovanni Segala, Pietro Ricchi and Francesco Ruschi among others. The sculptor Giuseppe Maria Mazza (1653-1741) made large bronze reliefs for the Church.





## THE ADDRESS

San Clemente Palace Kempinski - most desired address in Venice. It is a legendary retreat that sits on its own private island just minutes away from Piazza San Marco by one of the hotel's iconic complimentary boats.

Historical San Clemente Palace is offering experiences beyond expectations including 7 hectares of lush gardens and a 12th century church which is ideal for celebrations. Our guests can experience privacy and serenity while relishing Venice's melody of beauty, luxury and culture. The hotel features 196 suites and rooms surrounded by lush gardens or overlooking the Venice lagoon.





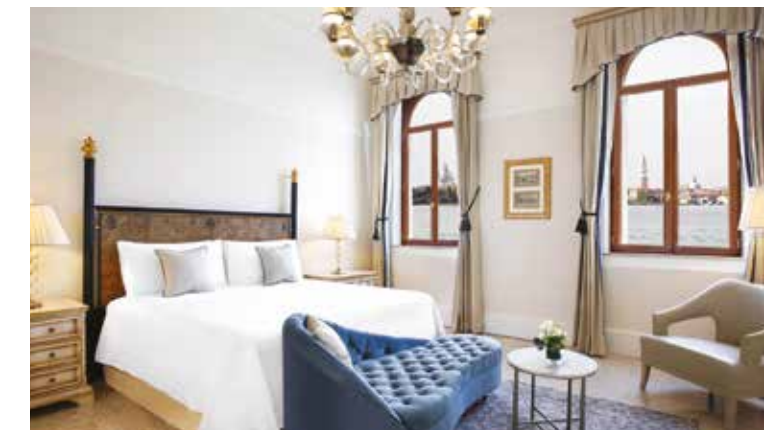
## INSIEME RESTAURANT & BREAKFAST EXPERIENCE

To have breakfast in the courtyard of the historical island of San Clemente, accompanied by classic music, is a special experience. You will never want to leave the Insieme Restaurant and the church courtyard.

With the picturesque monastery churchyard that dates back to the 15th century, or in the inside salons enriched with elegant decors and original tapestries, Insieme Restaurant is also an exclusive venue for your special dinners.

The dishes are prepared with the freshest local products, such as jams from local producers, cheese from nearby farms, and herbs and vegetables grown in the Venetian gardens and in the small private vegetable garden of the hotel.





## ROOMS & SUITES

San Clemente Palace Kempinski has 32 special, 34 junior suites and 130 luxury rooms make them spacious havens for the discerning guest who enjoys the luxury, elegant, tranquil. Well-appointed setting overlooking the lagoon or the Palace's heavenly gardens. Venetian decorations blend with legacy design elements, while typical high Venetian ceilings are creating a sense of home.

## MARCO POLO SUITE

Visitors entering Marco Polo Suite are welcomed by the enchanting impression of embarking on a historical vessel, sailing past the gateway to medieval Venice. The approx. 110 sq m (1.184 sq ft) suite offers a C-shaped living space with four windows framing mesmerizing vistas of St. Mark's bell tower and a luxurious bedroom overlooking the lagoon. A dining area is comfortably arranged within the vast living space, which includes comfortable furniture group embracing the stunning views.





## TINTORETTO SUITE

Named in honour of Venice's famed Renaissance 16th-century painter Jacopo Tintoretto, the luxurious suite offers a bright and airy residential atmosphere with approx. 117 sq m (1,259 sq ft) living space. Elegantly appointed with classic furnishings, the voluminous suite features Murano glass chandeliers strung from high ceilings, traditional Terrazzo flooring and large windows overlooking the Palace's centuries-old gardens or the Venetian Lagoon which offers one of the most exclusive sunset views.

The Tintoretto Suite can accommodate up to four adults with the addition of two rollaway beds, and it also has connecting doors to the adjacent Deluxe Room which can be joined to create a space for up to six people - making it a versatile option for any stay.





## SAN CLEMENTE SUITE

Indulge yourself with space and privacy in San Clemente Palace Kempinski's finest suite. The spacious living and sleeping rooms are complete with state-of-the-art equipment, offering the perfect space for a retreat - and are the ideal sanctuary after a day spent in Venice. With picture windows running the length of every room, the Palace's most expansive and private suite offers unrivalled views of the lagoon city. The interiors are replete with bespoke details including custom calacatta marble, historical wooden pillars, handmade silks and Murano tapware. San Clemente Suite also offers the use of a private pier, suitable for yachts of up to 30 metres and further exclusive benefits.

This magnificent accommodation with approx. 190 sq m (2,045 sq ft) living space has been chosen by World Travel Awards as the "Best European Suite" of 2018.





## ACQUERELLO RESTAURANT & SAN CLEMENTE BAR

A true expression of culinary excellence and bespoke service, Acquerello is a seductive marriage of unpretentious finesse and elegance. Our Executive Chef masterfully creates epicurean aquarelles beyond expectations that depict delicacies from the Adriatic Sea, and culinary inspirations of modern Venetian and East Mediterranean origin.

Special San Clemente Prosecco and wines, and hand-crafted cocktails, complemented by a tailored menu of Mediterranean recipes will accompany you during the best sunset in Venice.





## THE GARDENS & HILLS

Great care and respect have been kept maintaining the original typology of green areas: the perfumed linden trees, cypresses, elms and nettle trees. The island offers multiple courtyards among the Hotel's wings, such as the Main Courtyard together with the natural, palm and secret gardens which are the most beautiful ones in Venice. Here you will find a private enclave of tranquillity, a true garden sanctuary that offers endless possibilities making each and every stay an unforgettable one.

Every year Historical San Clemente Palace is hosting different art forms from various famous artists in these splendid gardens (displayed Art - Igor Mitoraj's Sleeping beauty).





## BESPOKE ARRANGEMENTS

From bespoke flower arrangements to elegant room and suit decorations for your guests, the San Clemente Palace Kempinski specialists will assure that each of your needs are flawlessly met. We look forward to creating indelible memories for you to share.

The possibilities to organize special events and banquets are endless: from the centuries-old park to the elegant internal dining halls; from the ancient courtyards to the area surrounding the swimming pool.





## SPORTS & LEISURE

San Clemente Palace Kempinski offers the best swimming pool facility in Venice. The heated outdoor swimming pool is the ideal location for a refreshing break during the entire season. The 21.5 meters pool is located in the middle of the island and surrounded by exclusive cabanas and the picturesque gardens of the resort.

Just a short walk away from your room, you will find a great range of fitness facilities. Inside, we have a state-of-the-art Techno gym complete with treadmills, elliptical machines, step machines and stationary bicycles - all of which come with their own TV, iPod dock and an advanced cardiovascular monitor that allows you to track optimum activity levels. Nevertheless, if you are an outdoor person, you will certainly enjoy our 1.500 meters jogging path through the centuries old park.

Bordered by a natural lake and with picturesque views over the lagoon, the pitch & putt course provides the best setting where you can enjoy a few leisurely rounds of golf immersed in the beauty of this private enclave. Our professionally designed tennis court, on the other hand, offers boasting views over the Venice lagoon - the only thing that might distract you from a perfect game of tennis.



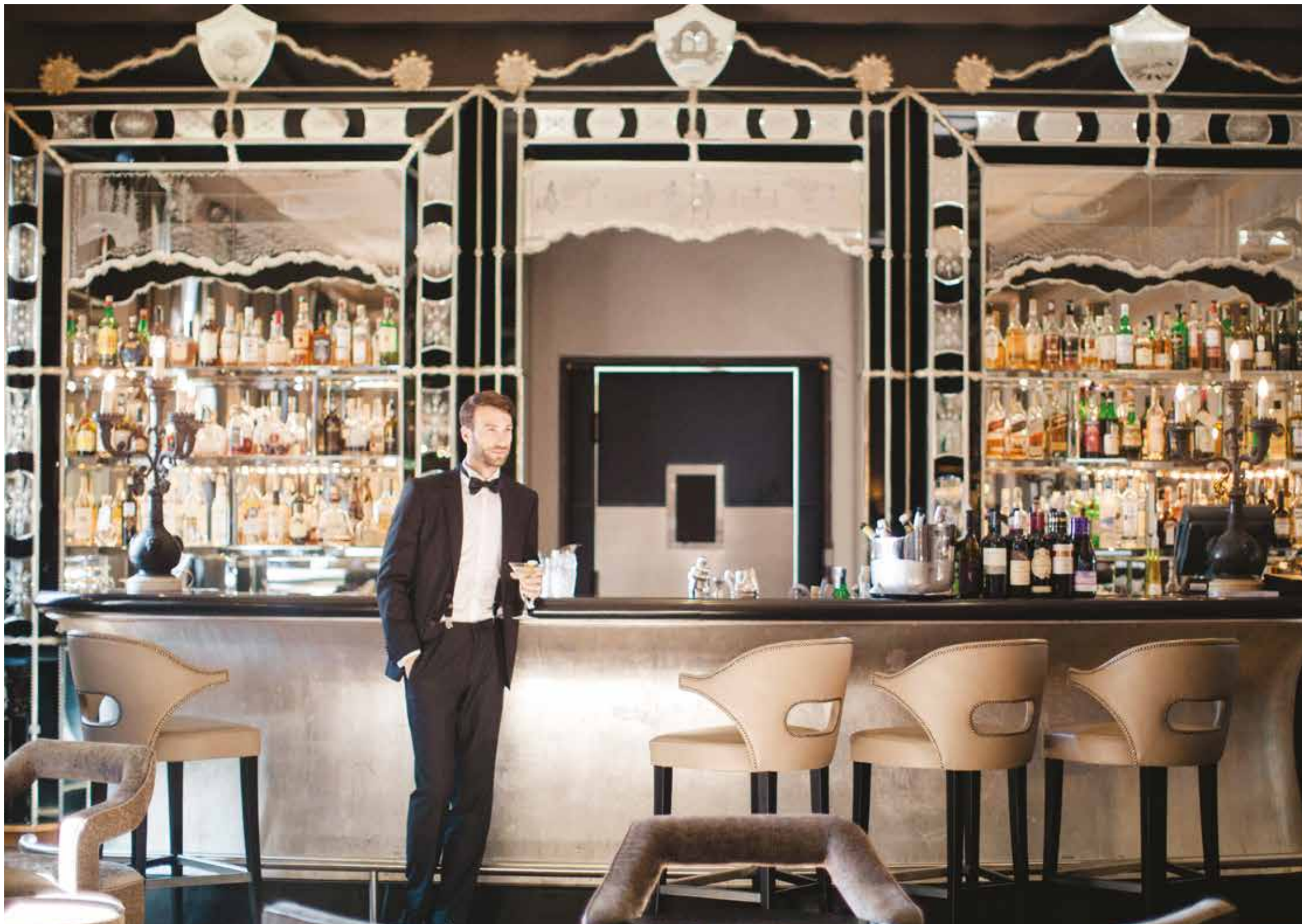


## SPA & FACILITIES

Serenity of Europe's Best Spa Award winner San Clemente Palace Kempinski will enchant you. The unique SPA experience of our hotel features a luxurious couples suite, and indulgent wet area with sauna, steam bath and showers, together with a hair saloon. After a busy day in Venice, you may also prefer to enjoy the natural park of San Clemente Palace and the outdoor SPA cabanas.

The Merchant of Venice treatments on offer at our SPA facility use noble and perfumed oils. They are created in the laboratories in accordance with the ancient oriental traditions imported into Venice by the Venetian merchants throughout the centuries.





## LOUNGE & BARS

Just a few steps from the swimming pool, La Dolce Bar with its cocktails is the ideal retreat for warm summer afternoons while the Clemente Bar is the typical American Bar, perfect for a coffee or a cocktail. At the Garden Bar you can live the authentic Venetian atmosphere of the Ritual Aperitif, watching a breath-taking sunset over the lagoon.

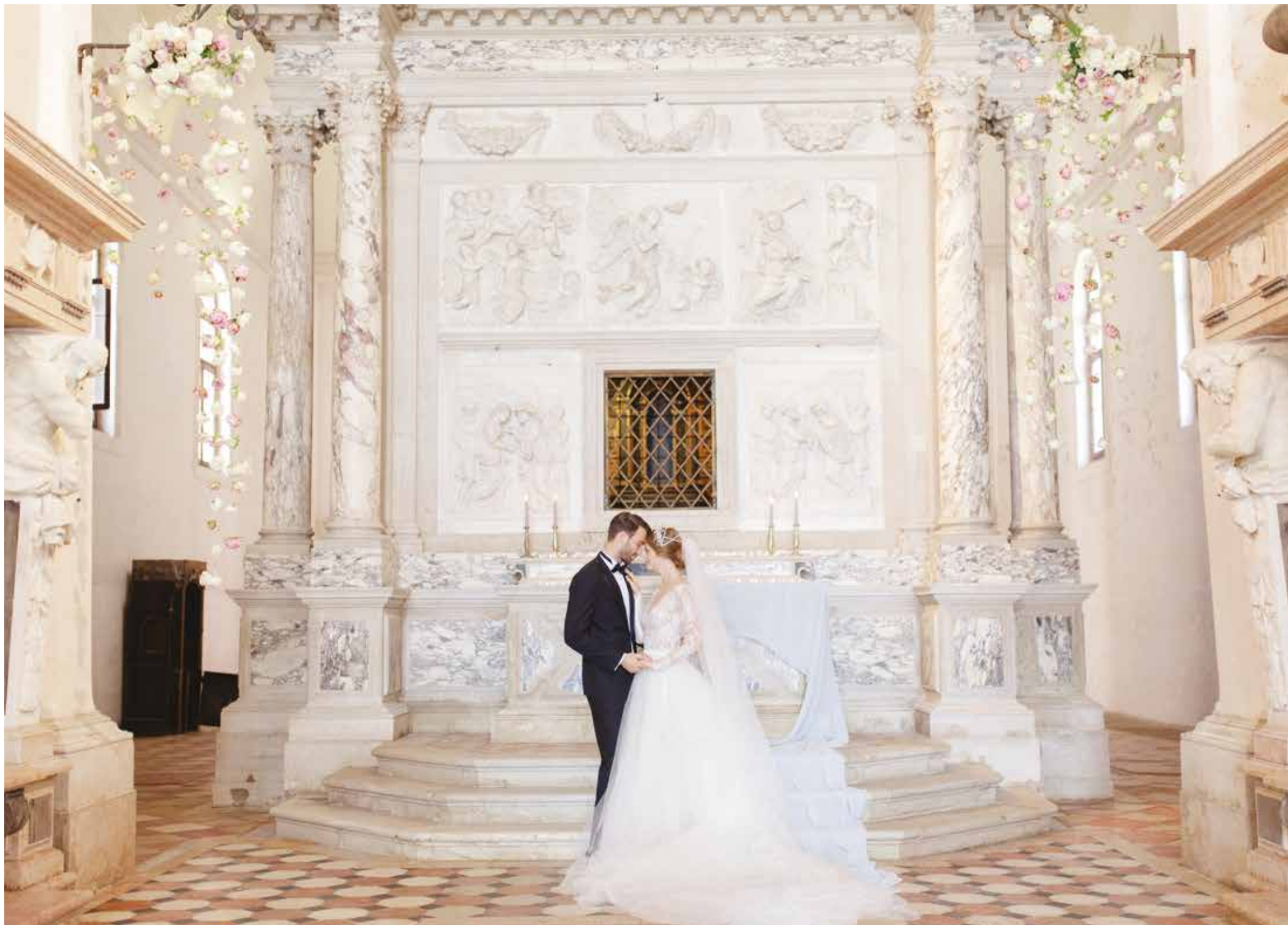




## MEETING & EVENTS

With its unique mix of venues, San Clemente Palace Kempinski is a superb choice for meetings, incentives and private events. Situated in a separated building and surrounded by the Island's verdant gardens, the conference centre offers six meeting rooms and two spacious foyers. The meeting rooms can be used individually or combined as a dedicated and private meeting complex. All rooms are flooded with natural daylight and equipped with the most modern communication and presentation technology.





## OUR WEDDINGS

Offering evocative Venetian architecture and a breath-taking landscape, the privately-owned historical San Clemente Church is a magical backdrop for wedding celebrations. Charming and elegant gardens surrounded by cypress, magnolia and lime trees will make your wedding unforgettable.

San Clemente brides and grooms receive the highest level of care and attention from their initial meeting with our experienced staff to the last moment of their enchanted gathering.





## SAN CLEMENTE SUNSET

There are few natural marvels that capture the heart as completely as a beautiful sunset. Hues of gold, orange and purple set the sky alight invoking passion, inspiration and romance. Every sunset is alluring but some are more vibrant and colourful than others. The sunset from San Clemente is something splendid that you will remember for a long time.

The sunset from San Clemente's Sunset Hill, Acquerello Restaurant's Terrace, Garden Bar and Natural Lake is something splendid that you will remember for a long time.





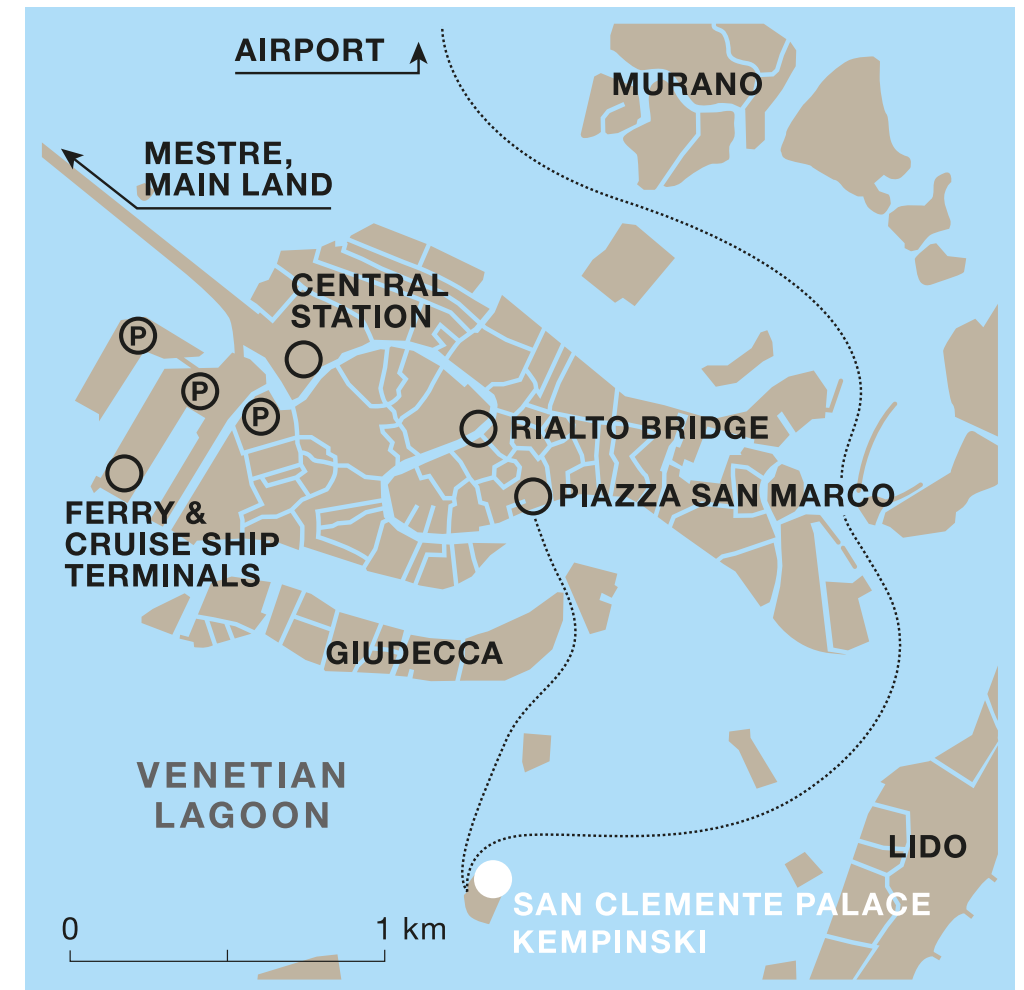
## LA DOLCE

A serene lifestyle concept surrounded by the lush San Clemente Gardens by the splendid heated outdoor pool, La Dolce at San Clemente Palace Kempinski Venice is an exclusive sanctuary to embark on a gastronomy journey.

After a refreshing swim, sip a luscious bellini or bite into an artisan pizza to savor a piece of “la dolce vita” in Italian flair. Take a seat while capturing a Venetian sunset as a backdrop to moments to cherish.

### LOCATION

San Clemente Island can be reached by complimentary resort shuttle, water taxi or private boat.



### DIRECTIONS

- Piazza San Marco - 10 minutes by resort shuttle
- Marco Polo Airport - 30 minutes by water taxi
- Santa Lucia Train Station - 20 minutes by water taxi





## ISLAND INFORMATION

- 1 Group Arrivals and Departures
  - 2 Hotel Entrance - Reception - Concierge
  - 3 Bikes Parking
  - 4 Sunset Hill
  - 5 Natural Garden
  - 6 Sunset Garden
  - 7 Clemente Bar & Sunset Bar
  - 8 Acquerello Signature Restaurant
  - 9 Historical San Clemente Church
  - 10 Church Terrace
  - 11 Water Taxi Dock (Boat Service from/to St. Mark's Square)
  - 12 Event Lounge
  - 13 Clemente Lounge
  - 14 Main Courtyard
  - 15 Luggage Courtyard
  - 16 Oriente Room
  - 17 Insieme Restaurant
  - 18 Insieme Courtyard
  - 19 Secret Garden
  - 20 Navigante Courtyard
  - 21 Art Courtyard
  - 22 Lido Hill
  - 23 Central Garden
  - 24 Conference Centre
  - 25 Lido Garden
  - 26 Olive Hill
  - 27 Natural Lake
  - 28 Golf Pitching Course
  - 29 Tennis Court
  - 30 Pool
  - 31 Palm Garden
  - 32 La Dolce Brasserie & Pool Bar
  - 33 Kids' Club
  - 34 Helipad
  - 35 Event Tent Area
  - 36 Fitness & SPA
  - 37 Lake Hill
  - 38 SPA Cabin
  - 39 Outside Fitness
  - 40 Adult Beach
  - 41 Buddha - Yoga Zone
  - 42 Open Air Cinema
- ■ ■ Jogging Track

## RESTAURANTS & BARS

- 8 Acquerello Signature Restaurant  
Fine Dining
- 17 Insieme Restaurant - Breakfast & Dining
- 32 La Dolce Brasserie & Pool Bar
- 7 Clemente Bar & Sunset Bar

## ROOMS & SUITES

- |   |   |  |
|---|---|--|
| <p><b>A</b> <i>Wing Rooms</i></p> <p>118 - 121<br/>218 - 242<br/>318 - 343<br/>225 - Tiepolo Suite<br/>325 - Tintoretto Suite</p> | <p><b>D</b> <i>Wing Rooms</i></p> <p>163 - 183<br/>263 - 276<br/>363 - 376</p>  | <p><b>G</b> <i>Lermak Suites</i></p> <p>501 - Malibran Suite<br/>502 - La Fenice Suite</p> |
| <p><b>B</b> <i>Wing Rooms</i></p> <p>101 - 116<br/>201 - 216<br/>301 - 316</p>  | <p><b>E</b> <i>Navigante Suites</i></p> <p>186 - 189 - Navigante Suites<br/>601 - 602 - Lido Suites<br/>185 - Marco Polo Suite<br/>600 - San Clemente Suite</p> | <p><b>H</b> <i>Giardini Villa</i></p> <p>701 - 702</p>                                     |
| <p><b>C</b> <i>Wing Rooms</i></p> <p>159 - 162<br/>244 - 262<br/>344 - 362</p>  | <p><b>F</b> <i>Lagoon Suites</i></p> <p>421 - 423<br/>431 - 433</p>   |  |



San Clemente Palace  
Kempinski

VENICE